



LEGACY FAMILY OFFICE®



Tamara Surratt, MBA

President & CEO

Legacy Family Office

9990 Coconut Road • Suite 225 • Bonita Springs • FL • 34135

239-949-1982 • Fax - 239-949-1981

tsurratt@legacyfamilyoffice.com • www.legacyfamilyoffice.com



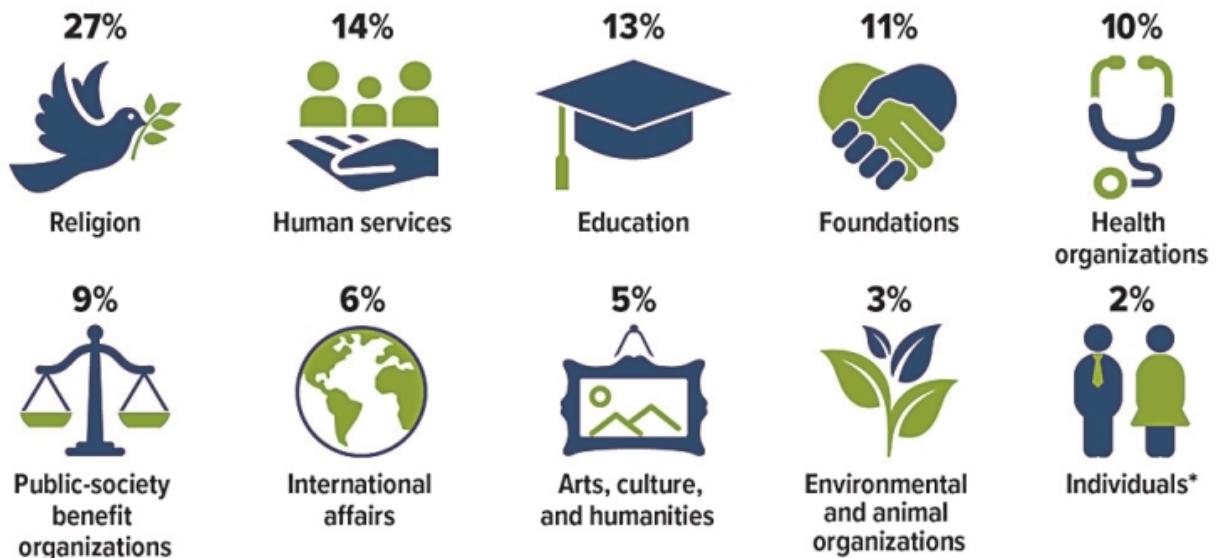
LEGACY FAMILY OFFICE®

Legacy Family Office is built around your family and your needs, and intently focused on simplifying your complex financial matters. We help families preserve wealth across generations.

If you would like to discuss the unique challenges facing your family, please contact our experienced team at Legacy Family Office.

Decline in Charitable Giving

Americans gave almost \$500 billion to charity in 2022 — a strong show of generosity but a 3.4% decline (10.5% adjusted for inflation) from record giving in 2021. This was only the fourth time in the last 40 years that charitable giving fell in current dollars. The stock market downturn, high inflation, and other economic uncertainties caused many households to cut back on giving. Even so, a wide range of charities benefited from generous donations. Here are the types of recipients, by percentage of total charitable contributions.



*Primarily donations of medications from pharmaceutical company foundations

Source: Giving USA 2023

Reviewing Your Estate Plan

An estate plan is a map that explains how you want your personal and financial affairs to be handled in the event of your incapacity or death. Due to its importance and because circumstances change over time, you should periodically review your estate plan and update it as needed.

When Should You Review Your Estate Plan?

Reviewing your estate plan will alert you to any issues that need to be addressed. For example, you may need to make changes to your plan to ensure it meets all of your goals, or when an executor, trustee, or guardian can no longer serve in that capacity. Although there's no hard-and-fast rule, you'll probably want to do a quick review each year, because changes in the economy and in the tax code often occur on an annual basis. At least every five years, do a more thorough review.

You should also revisit your estate plan immediately after a major life event or change in your circumstances.

- There has been a change in your marital status (many states have laws that revoke part or all of your will if you marry or get divorced) or that of your children or grandchildren.
- There has been an addition to your family through birth, adoption, or marriage (stepchildren).
- Your spouse or a family member has died, has become ill, or is incapacitated.
- Your spouse, your parents, or another family member has become dependent on you.
- There has been a substantial change in the value of your assets or in your plans for their use.
- You have received a sizable inheritance or gift.
- Your income level or requirements have changed.
- You are retiring.
- You have made (or are considering making) a change to any part of your estate plan.



Some Things to Consider

- Who are your family members and friends? What is your relationship with them? What are their circumstances in life? Do any have special needs?
- Do you have a valid will? Does it reflect your current goals and objectives about who receives what after you die? Is your choice of an executor or a guardian for your minor children still appropriate?
- In the event you become incapacitated, do you have a living will, durable power of attorney for health care, or do-not-resuscitate order to manage medical decisions?
- In the event you become incapacitated, do you have a living trust or durable power of attorney to manage your property?
- What property do you own and how is it titled (e.g., outright or jointly with right of survivorship)? Property owned jointly with right of survivorship passes automatically to the surviving owner(s) at your death.
- Have you reviewed your beneficiary designations for your retirement plans and life insurance policies? These types of property pass automatically to the designated beneficiaries at your death.
- Do you have any trusts, either living or testamentary? Property held in trust passes to beneficiaries according to the terms of the trust. (The use of trusts involves a complex web of tax rules and regulations, and usually involves upfront costs and ongoing administrative fees. You should consider the counsel of an experienced estate professional before implementing a trust strategy.)
- Do you plan to make any lifetime gifts to family members or friends?
- Do you have any plans for charitable gifts or bequests?
- If you own or co-own a business, have provisions been made to transfer your business interest? Is there a buy-sell agreement with adequate funding? Would lifetime gifts be appropriate?
- Do you own sufficient life insurance to meet your needs at death? Have those needs been evaluated?
- Have you considered the impact of gift, estate, generation-skipping, and income taxes, both federal and state?

This is just a brief overview. Each person's situation is unique. An estate planning attorney may be able to assist you with this process.

Will You Work Beyond Traditional Retirement Age?

More than seven out of 10 current workers in a recent survey said they expect a paycheck to play a role in their income strategy beyond traditional retirement age. In fact, 33% expect to retire at age 70 or older, or not at all.¹

If you expect to continue working during your 60s, 70s, or beyond, consider the advantages and disadvantages carefully. Although working can enhance your retirement years in many ways, you may also face unexpected consequences, particularly when it comes to Social Security.

Advantages

There are many reasons why you may want to work during retirement. First and perhaps most obvious, a job offers a predictable source of income that can help pay for basic necessities, such as food, housing, and utilities.

Working may also allow you to continue saving on a tax-deferred basis through a work-based retirement savings plan or IRA. Traditional retirement accounts generally require you to take minimum distributions (RMDs) after you reach age 73 or 75, depending on your year of birth; however, if you continue working past RMD age, you can typically delay RMDs from a current employer's plan until after you retire, as long as you don't own more than 5% of the company. (Roth IRAs and, beginning in 2024, work-based Roth accounts do not impose RMDs during the account owner's lifetime.)

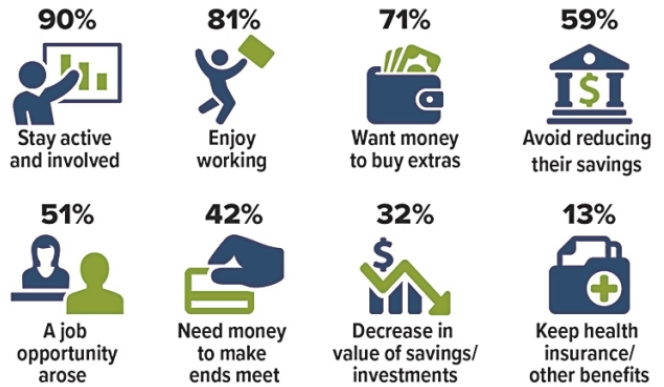
Moreover, employment can benefit your overall well-being through social engagement with colleagues, intellectual stimulation, and, if you're employed in a field that requires exertion and movement, mobility and fitness.

Working may also provide access to valuable health insurance coverage, which can supplement Medicare after the age of 65. Keep in mind that balancing work-sponsored health insurance and Medicare can be complicated, so be sure to seek guidance from a qualified professional.

A paycheck might also allow you to delay receiving Social Security benefits up to age 70. This will not only increase your monthly benefit amount beyond what you'd receive at early or full retirement age, it will add years of earnings to your Social Security record, which could further enhance your future payments.

If one of your financial goals is to leave a legacy, working longer can help you continue to build your net worth and preserve assets for future generations and causes.

Why Retirees Work



Source: Employee Benefit Research Institute, 2023 (multiple responses allowed)

Disadvantages

There are some possible drawbacks to working during retirement, especially regarding Social Security. For instance, if you earn a paycheck *and* receive Social Security retirement benefits before reaching your full retirement age (66–67, depending on your year of birth), part of your Social Security benefit will be withheld if you earn more than the annual Social Security earnings limit. However, the reduction is not permanent; in fact, you'll likely receive a higher monthly benefit later. That's because the Social Security Administration recalculates your benefit when you reach full retirement age and omits the months in which your benefit was reduced.

After reaching full retirement age, your paycheck will no longer affect your benefit amount. But if your combined income (as defined by Social Security) exceeds certain limits, it could result in federal taxation of up to 85% of your Social Security benefits.

Perhaps the biggest disadvantage to working during retirement is ... working during retirement. In other words, you're not completely free to do whatever you want, whenever you want, which is often what people most look forward to at this stage of life.

Finally, a word of caution: Despite your best planning and efforts, you may find that you're unable to work even if you want to. Consider that nearly half of today's retirees left the workforce earlier than planned, with two-thirds saying they did so because of a health problem or other hardship (35%) or changes at their company (31%).²

For these reasons, it may be best to focus on accumulating assets as you plan for retirement, viewing work as a possible option rather than a viable source of income.

1–2) Employee Benefit Research Institute, 2023

Get Ready to Visit the Metaverse

If you can't help but notice a growing fascination with "the metaverse," both in pop culture and the financial news, you may be wondering what all the buzz is about. Contrary to how it sounds, there is no single, definitive metaverse — at least not yet. The term refers broadly to the various 3-D digital spaces that are being created with emerging technologies such as virtual reality (VR), augmented reality (AR), and artificial intelligence (AI), so that people can have more lifelike online experiences.

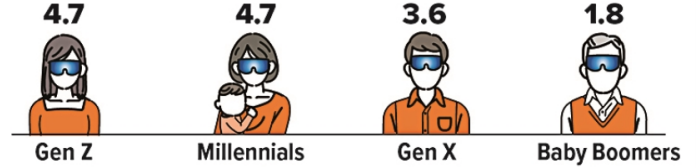
Giant tech companies and innovative start-ups have already spent billions of dollars to build virtual worlds and develop related software, devices, and accessories (such as headsets, bodysuits, and gloves with sensors). And some of them have little to show for it but steep losses.¹

Even so, continuing expansion of the metaverse is expected to have a major impact on the real business world, potentially to the tune of \$100 billion by the end of the decade.²

Is It the Future or Just a Game?

With virtual reality, users can interact with the digital images and video that they see inside their goggles. Augmented reality means that digital content is overlaid on top of real-world views. Mixed-reality applications combine elements of VR and AR. Each user is depicted by an avatar that represents that person's online identity.

Amount of time that people expect to spend in the metaverse in five years, by generation (hours per day)



Source: McKinsey, 2022

As it stands now, social gaming platforms are the most popular and familiar example of the metaverse. However, early adopters have donned their headsets to participate in immersive workout sessions and attend virtual live events such as concerts and music festivals. One survey found that many people can see themselves using the metaverse to shop (48%), seek health care (47%), travel virtually to other places (46%), catch up with friends and family (45%), learn something new (43%), collaborate with others (35%), or even go on a date (28%), in the next five years.³

Tech moguls seem confident that the metaverse is the inevitable evolution of the internet. Still, it's yet to be seen how compelling these virtual worlds will turn out to be. And with cutting-edge devices selling for \$1,500 to \$3,000 and up, it could be a while until access to the metaverse is affordable for the typical consumer.⁴

1–2, 4) Bloomberg.com, January 23, 2023

3) McKinsey, 2022

IMPORTANT DISCLOSURES Legacy Family Office, LLC. does not provide investment, tax, legal, or retirement advice or recommendations. The information presented here is not specific to any individual's personal circumstances. To the extent that this material concerns tax matters, it is not intended or written to be used, and cannot be used, by a taxpayer for the purpose of avoiding penalties that may be imposed by law. Each taxpayer should seek independent advice from a tax professional based on his or her individual circumstances. These materials are provided for general information and educational purposes based upon publicly available information from sources believed to be reliable — we cannot assure the accuracy or completeness of these materials. The information in these materials may change at any time and without notice.